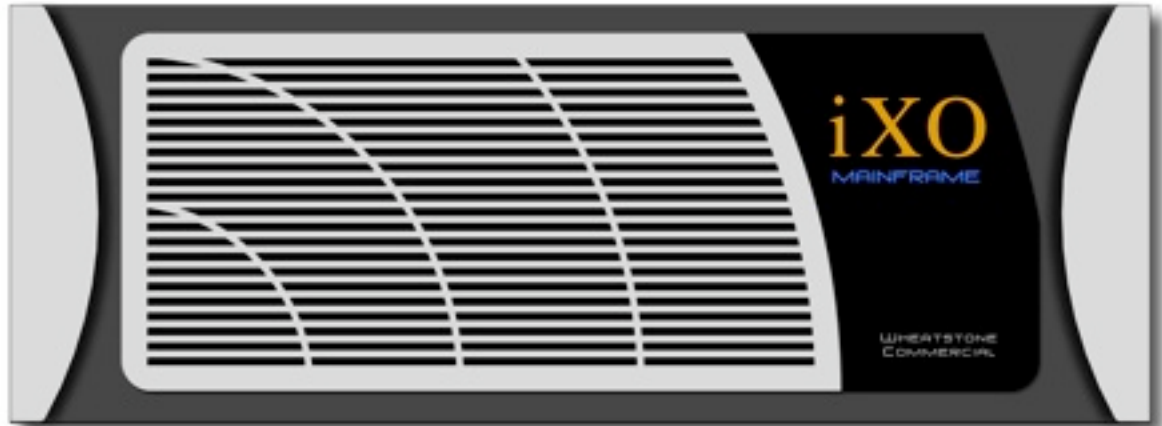


iXO EXPANDABLE DSP AUDIO PLATFORM



Until now, complex audio systems have been... well, complex to configure. No longer.

Meet iXO by Wheatstone Commercial.

iXO is a powerful expandable router-based DSP audio mixing and signal processing platform.

Wheatstone has been a leader in mission-critical audio mixing and routing for broadcast radio and television stations for more than 30 years. That same technology forms the core of iXO.

A router-based audio system gives you extreme flexibility in designing, configuring, and changing your system. Simply connect all audio sources, destinations and control cables to iXO. Everything else is done in software!

The intuitive **iXOverture** software is by far the easiest to use in the industry; no long learning curve required. It allows for much faster system design and configuration – you can create highly complex audio systems in minutes. No more dragging or dropping, or having to monitor the DSP resource meter while you design your system.

APPLICATIONS

Convention Centers – Hotel/Casinos – Stadiums – Arenas – Houses of Worship – Multi-purpose Facilities – Distance Learning Centers – Theme Parks – Performing Arts Centers – Courts – Auditoriums – Cruise Ships – Command and Control Centers

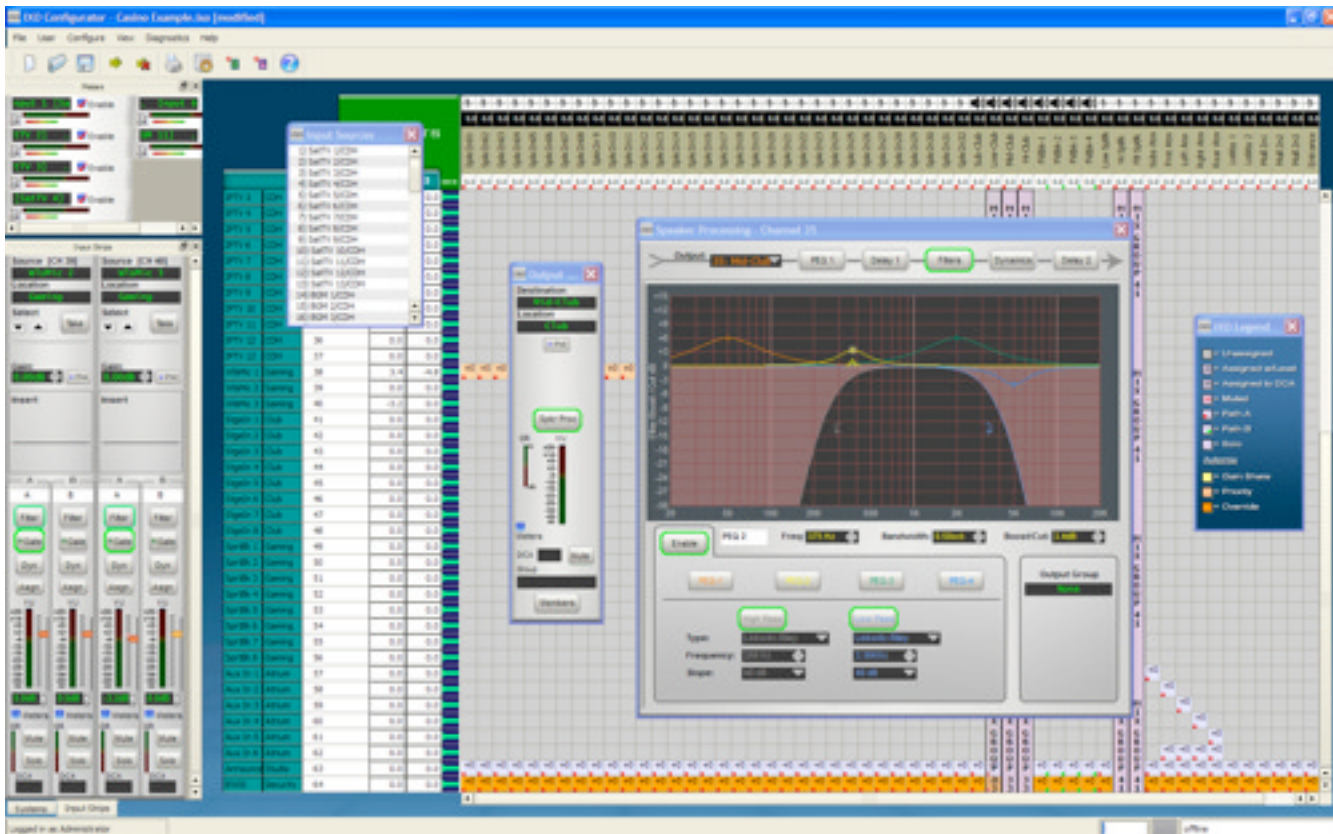
FEATURES

- Size from a single 32x32 frame to up to 3072x3072 in multiple frames
- Analog, AES/EBU digital, and CobraNet®
- Connect two frames via CAT5E using the iXO Link for systems up to 64x64
- Connect up to 48 systems via CAT5E or fiber using iXO's AT Audio Transport link to a Wheatstone iXO Wheatnet switch
- Routing – any input source can go to any output destination with extremely low latency, under 2ms for any input to any output
- Mixing and automatic mixing
- Dynamics, parametric and graphic equalizers, high-pass, low-pass, and notch filters, crossovers, delay, speaker processing, assignable acoustic echo cancelation, noise reduction
- Matrix crosspoint level adjust
- Muting
- Front-loading hot-swappable input, output, DSP, logic I/O and host cards
- Wheatstone iXO Wall Controllers
- External system control via AMX, Crestron, or other third-party systems

.....▶

The fastest way from concept to completion.

iXO EXPANDABLE DSP AUDIO PLATFORM



iXOverture software

- Easy-to-learn and operate, iXOverture is used to configure and program iXO
- iXOverture allows complete viewing and control of all system audio components: mixing, automatic mixing, dynamics, equalizers, filters, crossovers, delay, speaker processors, routing, remote controls, logic
- The iXOverture Wizard prompts you through the hardware configuration and builds the matrix — no compiling — no DSP “gas gauge”
- iXOverture includes extensive systems diagnostics

Wall Controllers

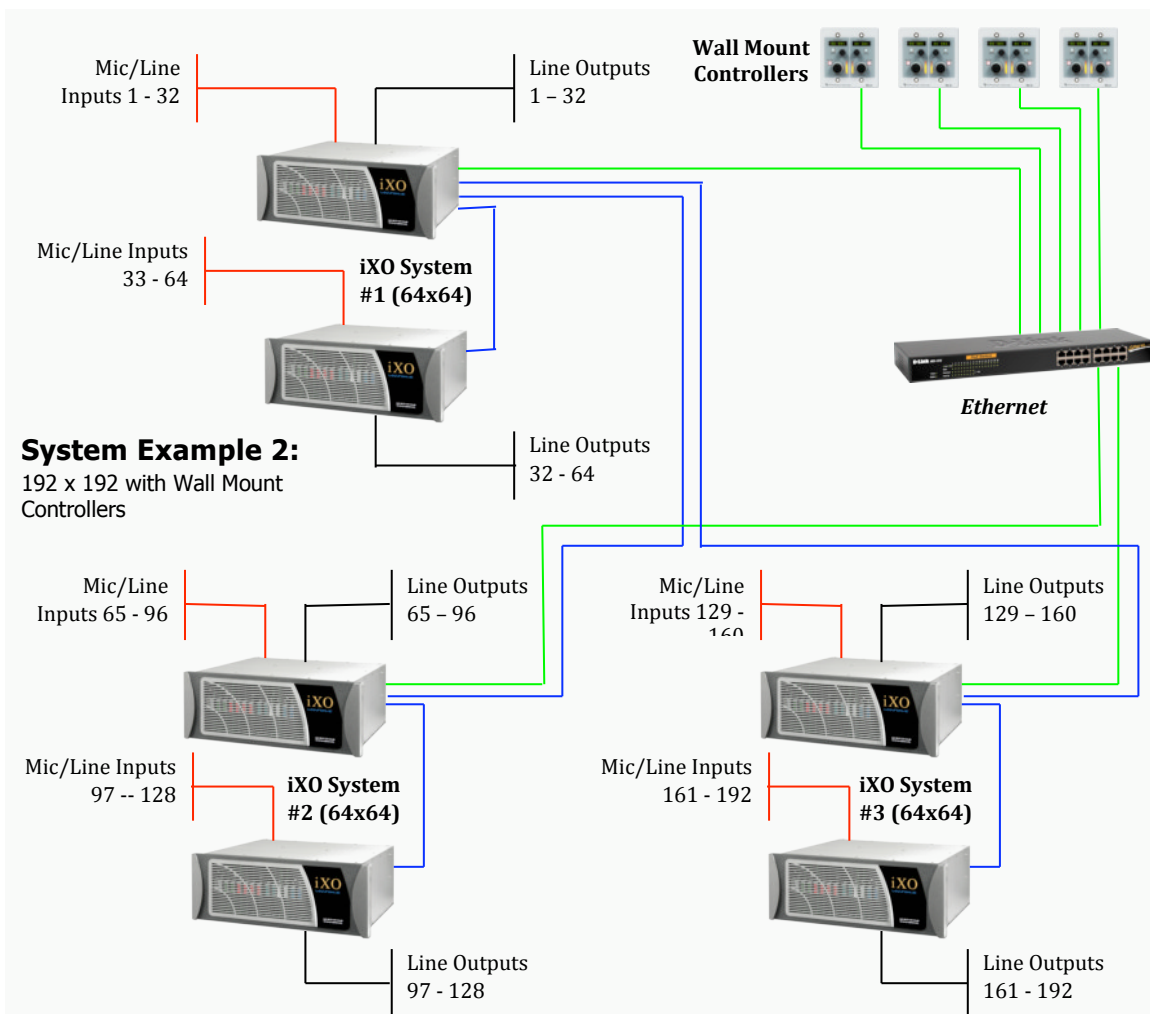
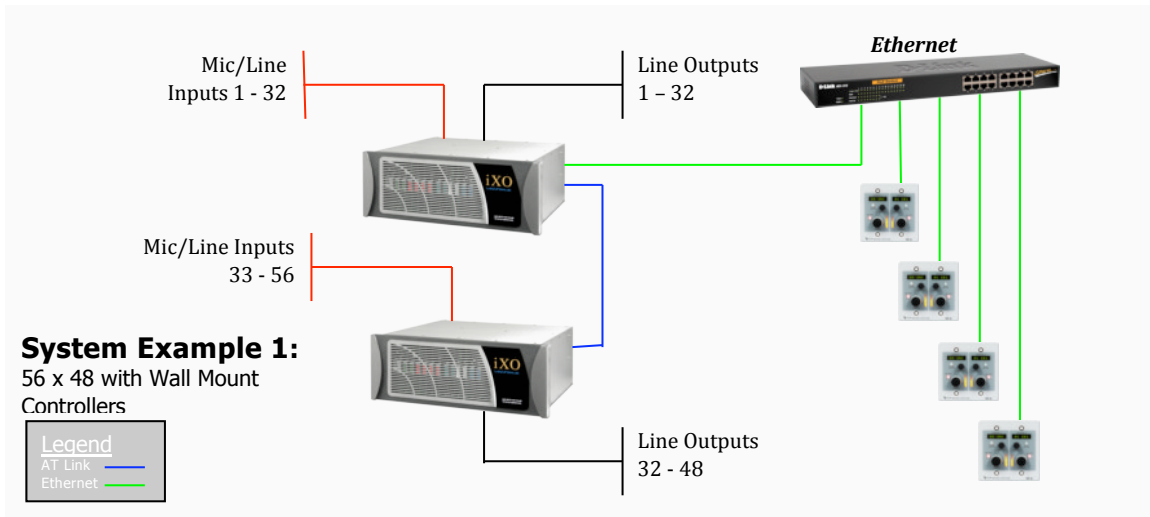
The SC-1, SC-2, and RC-1 are programmable Ethernet wall-mount control panels that allow for a powerful yet intuitive end-user interface.

Each controller can be programmed to be anything from a simple single channel level control to one that allows selection and level control of any user defined input channel, crosspoint, mix, DCA, or output level.



.....▶ **The fastest way from concept to completion.**

Typical System Configurations



The fastest way from concept to completion.

iXO EXPANDABLE DSP AUDIO PLATFORM



iXO-MF MAINFRAME

ML-1 Analog Input Module	8 channels, mic or line Rear module Phoenix connector
DI-8 Digital Input Module	8 channels/4 AES/SPDIF streams Rear module Phoenix connector
LO-8 Analog Output Module	8 channels, line Rear module Phoenix connector
DO-8 Digital Output Module	8 channels/4 AES/SPDIF streams Rear module Phoenix connector
LIO-32 Logic GPIO Module	16 logic inputs (GPI), 16 logic outputs (GPO) Rear module DB25 connector
CN-2 CobraNet Module	2 CobraNet ports
DSP-IP Input Processing Card	32 channels
DSP-Mx Mixing Module	
DSP-OP Output Processing Card	32 channels
CPU Host RJ45 Rear Module	DB9 serial data port 3 RJ45 connectors (A,B,C) for Wheatstone-AT Audio Transport links (to connect to other iXO-MF frames or the iXO Wheatnet switch) 1 RJ45 connector (D) for Ethernet 1 RJ45 connector (E) for iXO-Link, to connect two iXO-MF frames together to create a system up to 64x64
CPU Host Optical Rear Module	Optional; for linking frames where the distance is greater than that permitted for CAT5E cable; two SFP fiber transceivers (A,B), one RJ45 connector (C) for Wheatstone-AT Audio Transport links 1 RJ45 connector (D) for Ethernet 1 RJ45 connector (E) for iXO-Link, to connect two iXO-MF frames together to create a system up to 64x64
Power Supply, internal	100-240VAC, 50/60Hz <200W maximum fully loaded Optional redundant power supply with fail-safe interface
Dimensions	7.0"/178mm H 19.0"/483mm W 17.25"/438mm D with front panel installed

SPECIFICATIONS

Input, analog	20k Ω balanced -60dBu to +4dBu nominal, +24dBu maximum
Input, digital	75/110 Ω AES/SPDIF Sample rate converter, 8k-96k, 24bit -20dBFS nominal
Output, analog	10 Ω balanced +4dBu nominal, +24dBu maximum
Output, digital	75/110 Ω AES/SPDIF, 24bit 44.1kHz or 48kHz can be externally driven
AES Output Eye Pattern	\pm 500mV, 10nsec-155nsec
Frequency Response	\pm 0.1dB, 20Hz-20kHz
Dynamic Range	104dB analog, 120dB digital
THD+N	<0.01% @+4dBu analog <0.003% @+24dBu analog <0.0002% @-20dBFS digital
Noise	<-80dBu analog <-120dBFS digital
Crosstalk	<100dB 20Hz-20kHz analog <120dB 20Hz-20kHz digital

CONTROL

X-Y Controllers	Up to 253 external hardware controllers Unlimited software controllers
Controller Display	8-character, user programmable
Automation Interface	Available via Ethernet; 3rd party or Wheatstone Optional Wheatstone Event Scheduler software
Controller Signal Visibility	Via controller software

Features and specifications are subject to change without notice.

Wheatstone Corporation • 600 Industrial Drive • New Bern NC 28562-5440 USA
phone 1.252.638-7000 • fax 1.252.635-4857 • sales@wheatstone.com • www.wheatstone.com

.....▶ **The fastest way from concept to completion.**